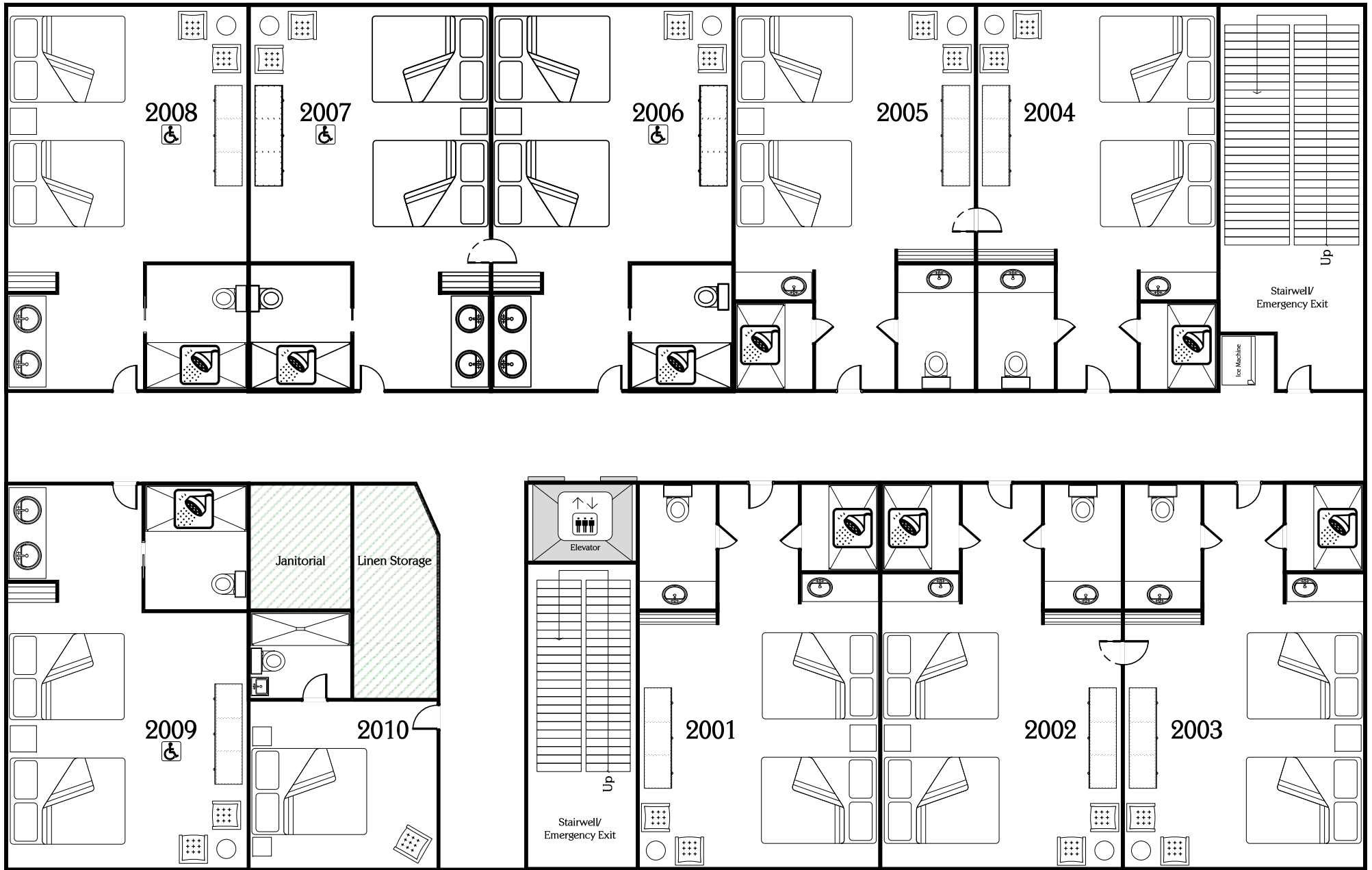
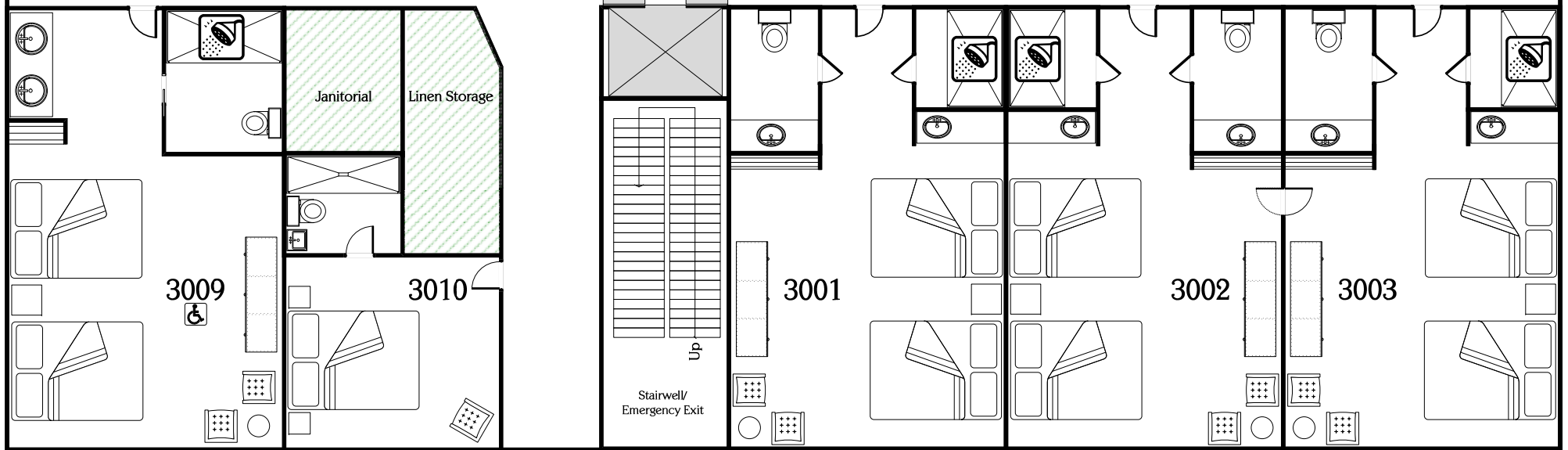
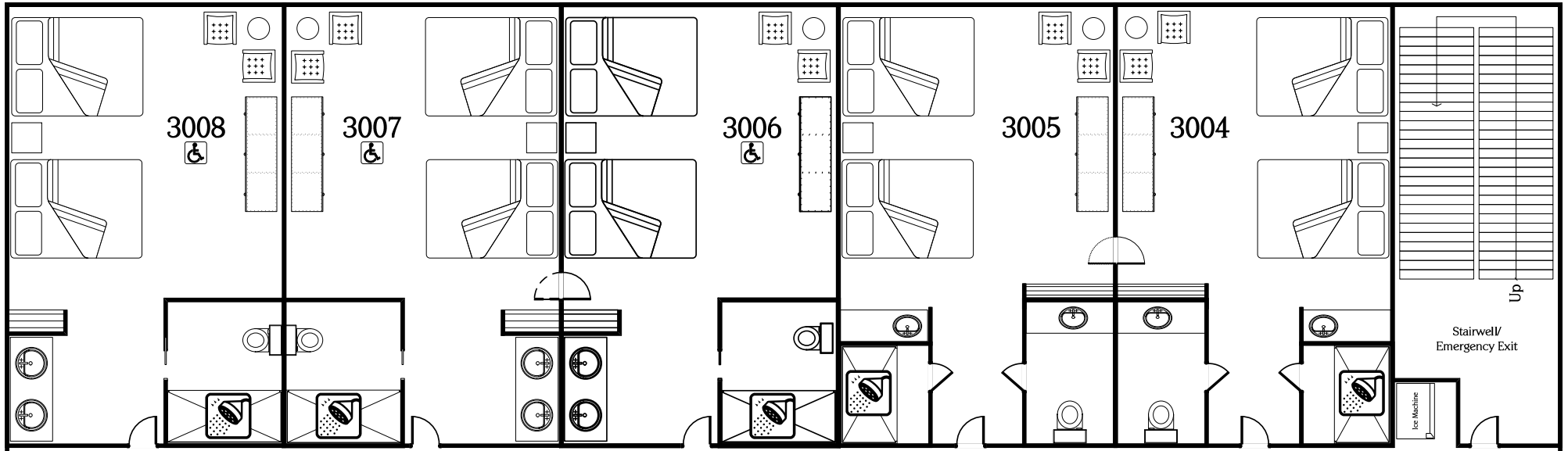


### The Lodge—1<sup>st</sup> Floor

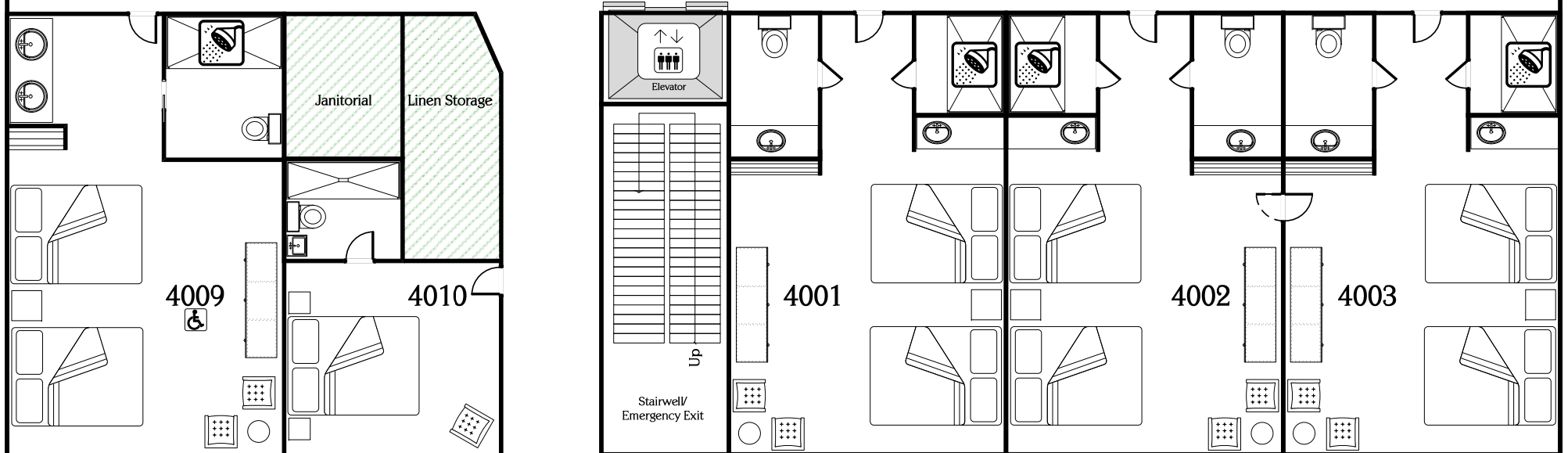
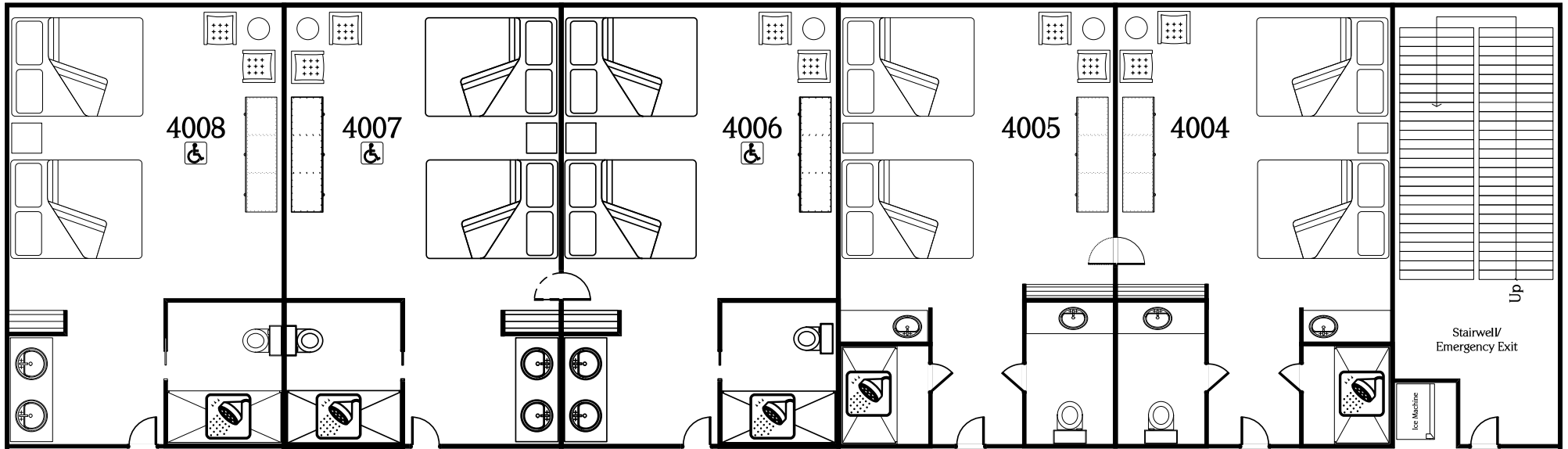
- 35 rooms provide lodging for up to 134 guests
- Spacious hotel-style rooms
- 12 fully-accessible rooms for guests with disabilities
- Interior hallways
- Wireless Internet access in all rooms
- Mike and Lib Patrick Room (3600 sq. ft.) — a fully equipped meeting room ideal for larger groups
- Seats 300 in rows of chairs or 200 at tables
- Ceiling-mounted video projector
- Complete sound system



The Lodge—2<sup>nd</sup> Floor



The Lodge—3<sup>rd</sup> Floor



The Lodge—4<sup>th</sup> Floor